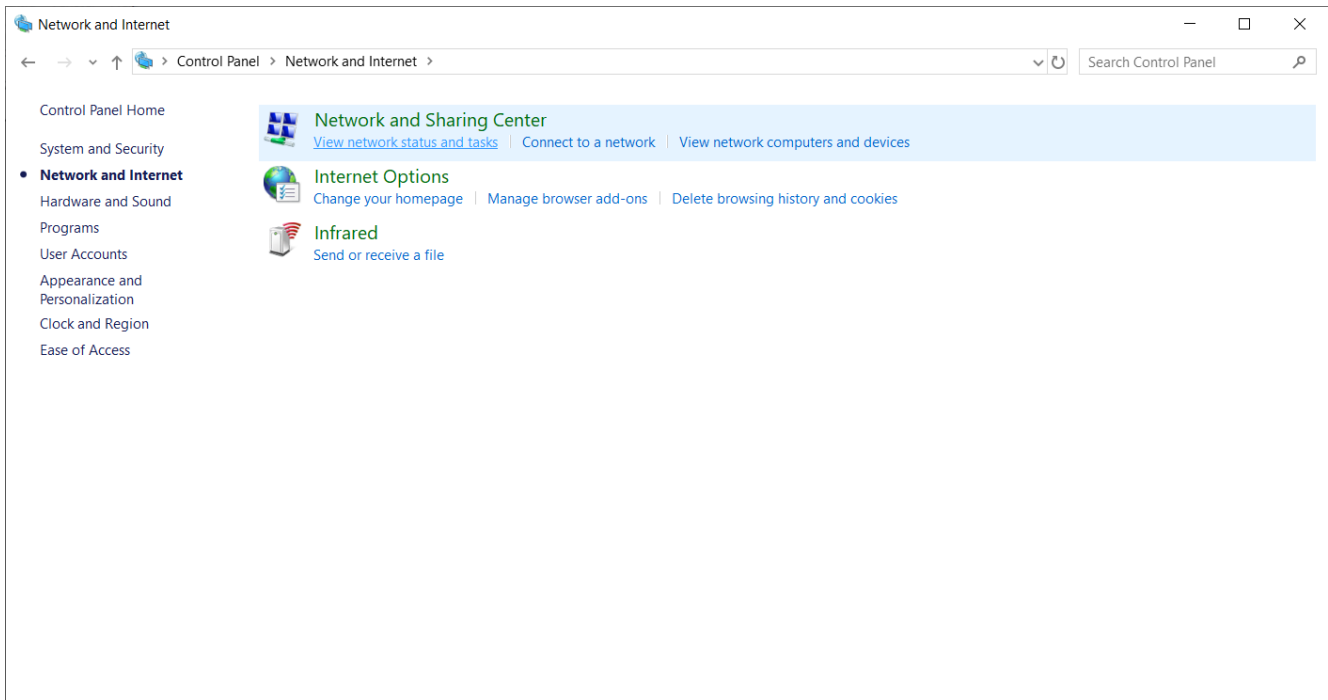
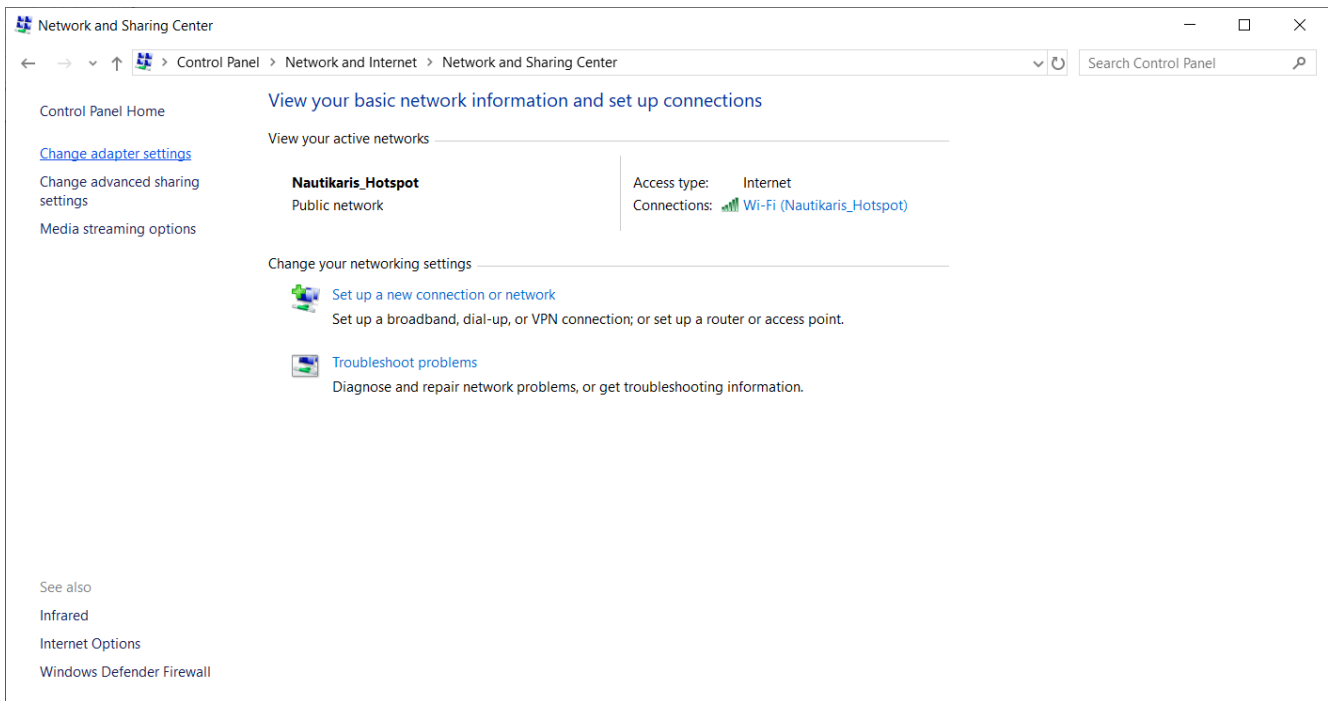


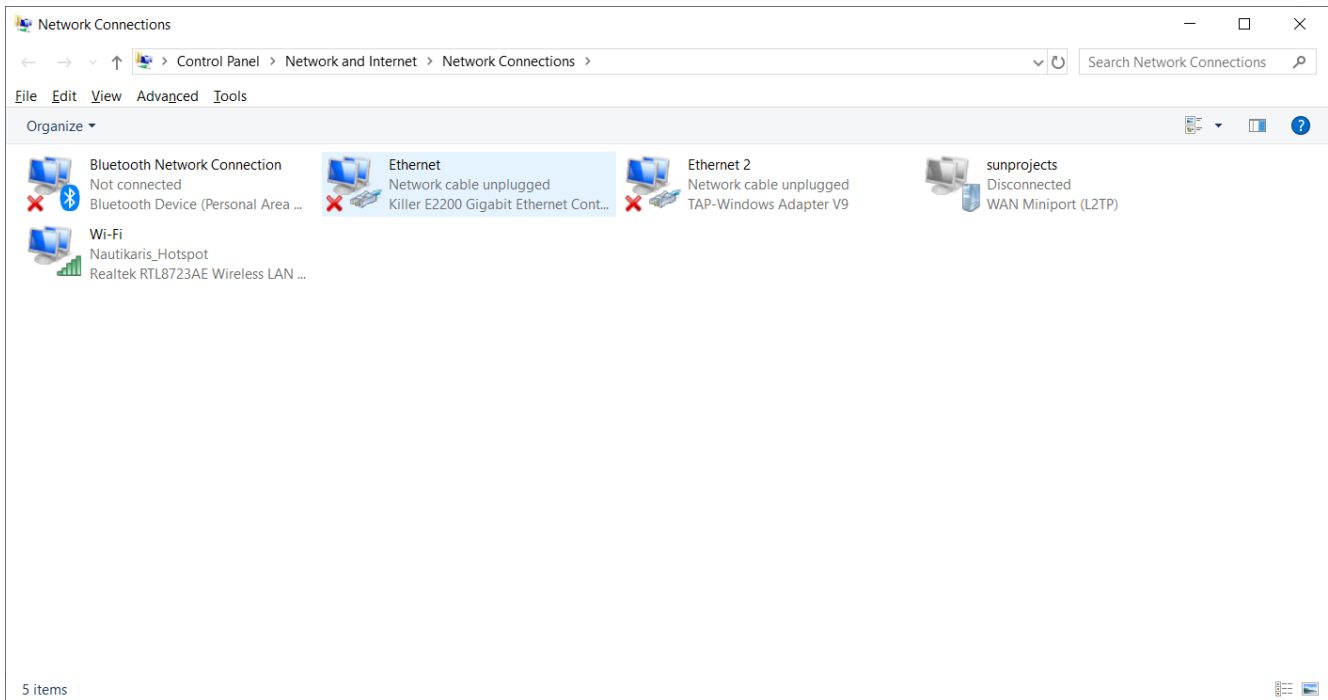
Select Network and Internet



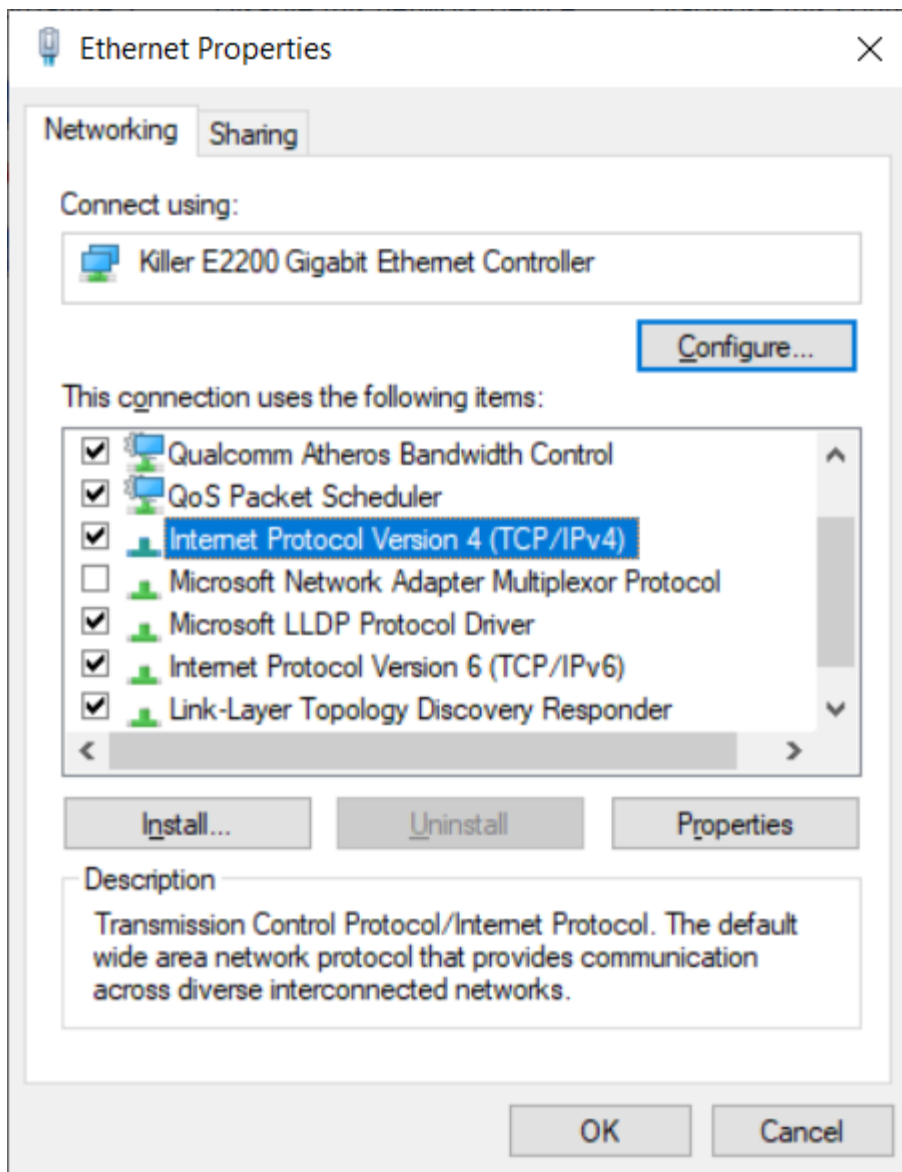
Select View network status and tasks



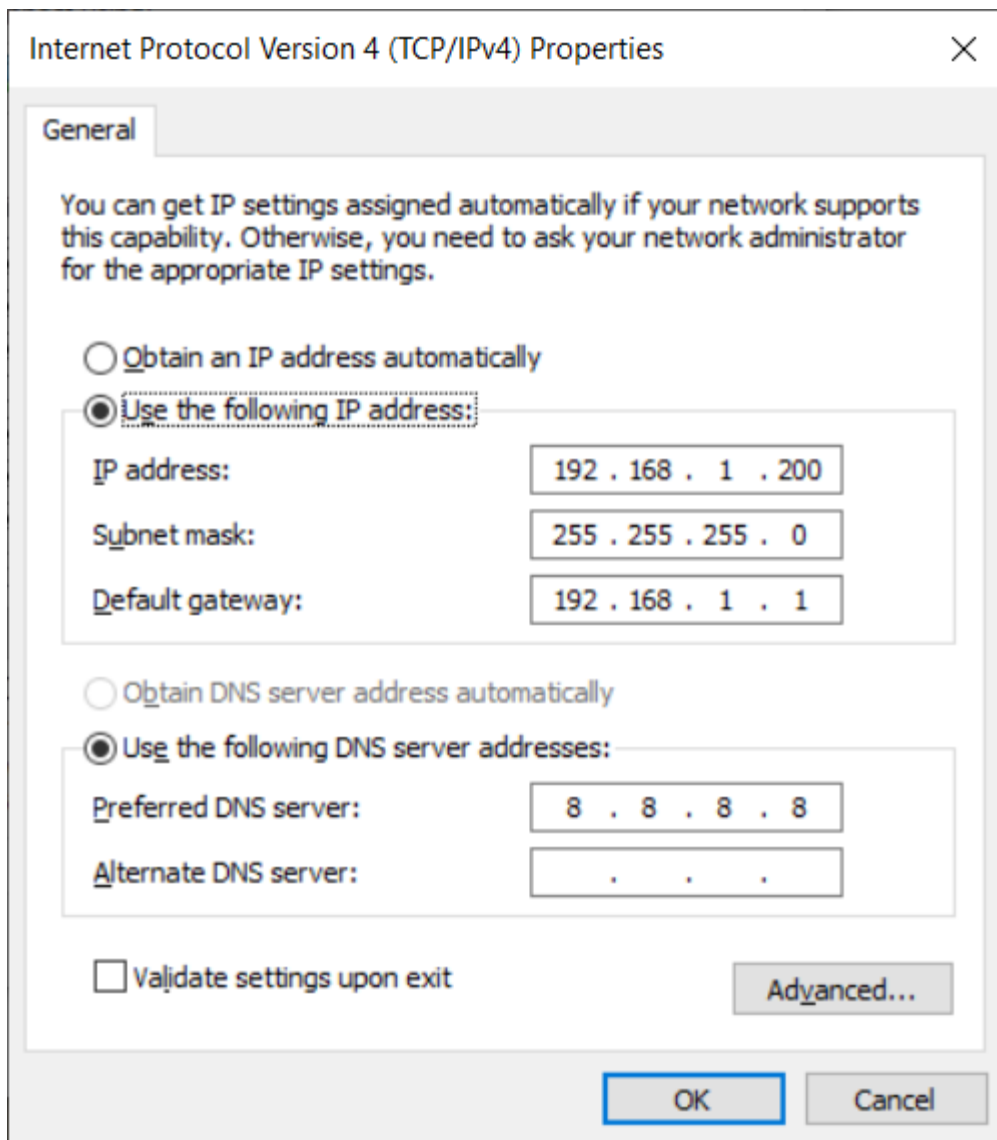
Select change adapter settings



Click on Ethernet with the right mouse button and select properties



Select Internet Protocol V4 and click on the Properties button



Configure your adapter with the following IP address, the iQcloud has 192.168.1.1
The DNS 8.8.8.8 is from Google.

You can now close the windows and do a check if you can ping the iQcloud.

Start the command prompt and do a ping (see below for the syntax)

If that is ok you can ping Google as I show below. (The iQcloud was not on my network so no response)

With a browser you can surf the Internet now or start the program to configure the iQcloud.

```
Opdrachtprompt
(c) 2017 Microsoft Corporation. Alle rechten voorbehouden.
C:\Users\Beheer>
C:\Users\Beheer>ping 192.168.1.1

Pinging 192.168.1.1 with 32 bytes of data:
Request timed out.
Request timed out.
Request timed out.
Request timed out.

Ping statistics for 192.168.1.1:
    Packets: Sent = 4, Received = 0, Lost = 4 (100% loss),

C:\Users\Beheer>ping google.com

Pinging google.com [216.58.211.110] with 32 bytes of data:
Reply from 216.58.211.110: bytes=32 time=4ms TTL=54
Reply from 216.58.211.110: bytes=32 time=5ms TTL=54
Reply from 216.58.211.110: bytes=32 time=5ms TTL=54
Reply from 216.58.211.110: bytes=32 time=5ms TTL=54

Ping statistics for 216.58.211.110:
    Packets: Sent = 4, Received = 4, Lost = 0 (0% loss),
    Approximate round trip times in milli-seconds:
        Minimum = 4ms, Maximum = 5ms, Average = 4ms

C:\Users\Beheer>_
```